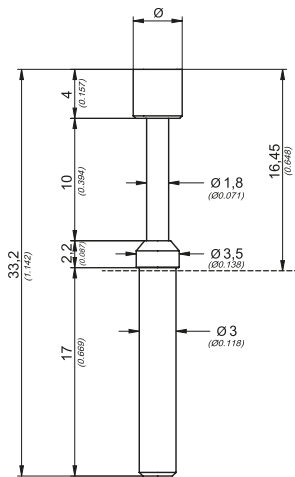


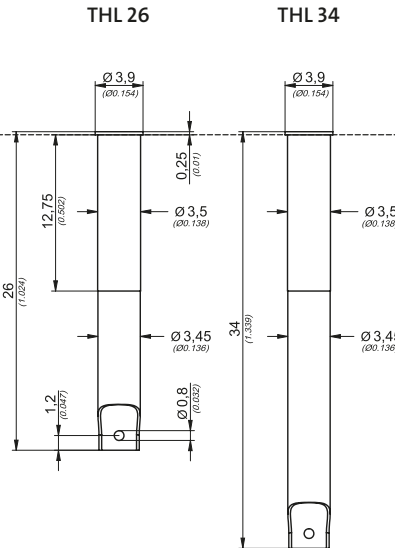


**Federkontaktstift TK 37L**  
Spring Contact Probe



2:1

**Hülse S 37N**  
Receptacle



**Serie Series TK37L**

Kopfform Head Type	Nr. No.	Tastkopf Ø mm Probe Tip Ø inch	Werkstoff Material	Federkraft Spring Force in cN	Oberfläche Tastkopf Surface Probe Tip
	02	2,30 0.09	S	Standard 170 cN	A / N
	05	2,30 / 4,00 0.09 / 0.157	M	Standard 6.0 oz.	A
	06	2,30 / 4,00 0.09 / 0.157	M		A
	07	6,50 0.256	M	Alternative 300 cN	A
	08	2,30 0.09	M	Alternative 10.6 oz.	A
	09	2,30 / 4,00 0.09 / 0.157	M		A
	10	2,30 / 4,00 0.09 / 0.157	M	+/- 20%	A
	13	1,80 0.071	S		A / N

**Technische Spezifikationen:**  
Technical Specifications:

Max. Federweg Max. Travel	10,0 mm 0.39 inch
Arbeitshub Working Stroke	8,0 mm 0.314 inch
Nennstrom Current Rating	5 A
Mittlerer Durchgangswiderstand Average Resistance	R <sub>m</sub> = 10 mΩ
Standardabweichung Standard Deviation	s = 1 mΩ

**Werkstoffe:**  
Materials:

Führungshülse Probe Barrel	Messing vergoldet Brass gold plated
Feder Spring	Stahl vergoldet Steel gold plated
Kolben (Kopf) Plunger (Head)	Stahl (S) oder Messing (M) vergoldet (A) oder vernickelt (N) Steel (S) or Brass (M) gold plated (A) or nickel plated (N)

**Bestellbeispiel:**  
Ordering Example:

Federkontaktstift  
Spring Contact Probe

TK37L.	07.	6,50.	M.	170.	A
Serie Series	Kopfform Headtype	Tastkopf Probe tip	Werkstoff Material	Federkraft Springforce	Oberfläche Surface

TK37L.07.6,50.M.170.A

Hülse Receptacle	S37N.	THL26
	Serie Series	Hülseart Receptacle Type

S37N.TH26